

**Vacuum Cleaner With
Water Filtration**

BKS 9218

BEKO

Please read this manual first!

Dear Customer,

We hope that your product which has been manufactured in modern facilities and passed through a strict quality control procedure will give you the best results.

Therefore, we advise you to read through this manual carefully before using your product and keep it for future reference.

This user manual will...

... help you use your machine in a fast and safe way.

Please read the User Manual before installing and starting your machine. Particularly follow the instructions related to safety.

Keep this User Manual within easy reach. You may need it in the future.

Please read all additional documents supplied with this machine.

Please note that this User Manual may be applicable for several other models. Differences between models will be identified in the manual.



This product has been produced in environmentally friendly, modern facilities



Contents

1 Safety Warnings	>2
2 Technical Aspects of your machine	>3
3 Using your machine	>4-5
4 Maintenance and Cleaning	>6

1 Safety Warnings

When using an electrical appliance, basic safety precautions should always be followed, including :

- Make sure that the voltage indicated on the appliance corresponds with the main voltage in your home.
- To prevent harming your appliance, do not use extension cords that supply insufficient current.
- Always unplug your appliance from outlet when not in use and before putting in and taking of any accessories, and before cleaning and maintenance.
- Do not use harmful chemicals and/or abrasive cleansers.

CAUTION : Do not use your appliance for vacuuming any flammable liquids such as gasoline, thinner, alcohol, kerosene, etc; as well as abrasive liquids such as acids, etc.

CAUTION : Do not let use your appliance to vacuum burning cigarettes, active cigarette ashes or matchsticks.

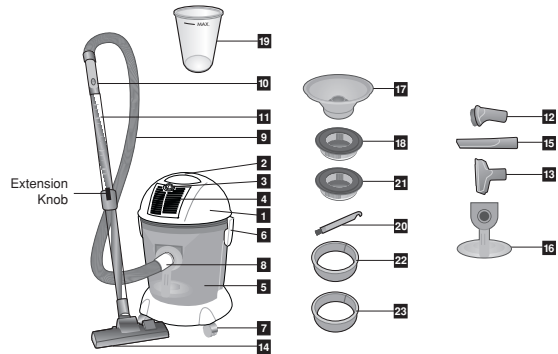
- Your close supervision is necessary when any appliance is used by or near children, old persons, or infirm persons.
- Your appliance has been designed for household use only. Do not use for industrial or commercial purposes, or under heavy duties.
- Ensure not to move the appliance over its cord, which may damage the insulation of the unit.

- Do not place on or near direct heat sources, such as hot stove, burner, or a heated oven.
- Never immerse the main body (i.e. the motor section) of your unit in water, and prevent from spilling out any water on the appliance.
- When using your appliance, never hold the suction hose close to your eyes and ears.
- Do not attempt to remove any sharp objects such as glasses, etc.
- To unplug, grasp the plug and pull from the power outlet. Never pull the cord.
- Do not attempt to remove the main plug when your hands are wet.
- If you are in doubt that the cord or plug is damaged, or that your device malfunctions in any manner whatsoever, including dropping down, etc., never turn on your appliance, nor attempt to repair by yourself. Take it to the nearest authorized service centre immediately.
- This appliance is not intended for use by persons (including children) with reduced physical, sensory or mental capabilities, or lack of experience and knowledge, unless they have been given supervision or instruction concerning use of the appliance by a person responsible for their safety.
- Children should be supervised to ensure that they do not play with the appliance.

Attention

Before using your product, read carefully the following operating instructions. It is suggested that you keep these instructions in safe place. Check whether the voltage indicated on the base of the product is the same as the voltage in your home.

2 Technical Aspects of your machine



- 1** Motor Unit
- 2** Handle
- 3** Exhaust Cover Locking / Unlocking Part
- 4** Exhaust Cover
- 5** Container
- 6** Container Locking / Unlocking Part
- 7** Wheels
- 8** Hose Inlet Part
- 9** Hose
- 10** Hose Outlet Part
- 11** Extension Tubes
- 12** Small Brush
- 13** Compact Head
- 14** Floor Brush
- 15** Crevice Tool
- 16** Air Distributing Part
- 17** Water Separator
- 18** Hepa Filter
- 19** Measuring Cup
- 20** Hepa filter cleaning brush
- 21** Spare hepa filter
- 22** Hepa filter sponge
- 23** Spare hepa filter sponge

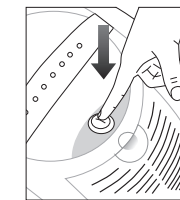
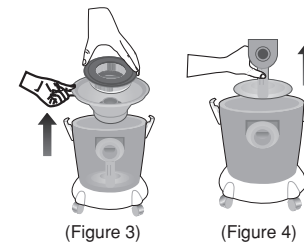
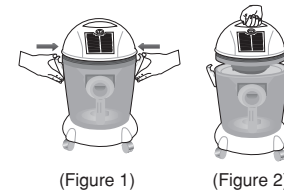
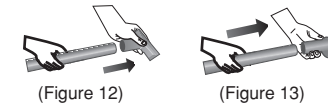
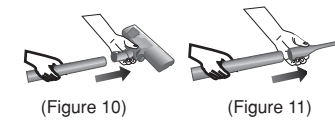
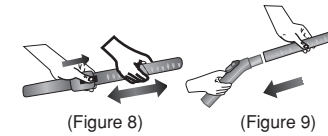
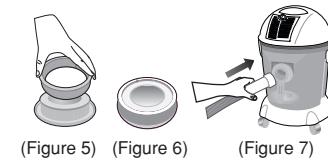
Gross weight : 10.4 kg
 Net weight : 8.6 kg
 Voltage / Frequency : 220-240V~ 50/60 Hz
 Adapter Isolation Class : □
 Dimensions : 635 x 405 x 405 mm.
 Power : 1800 W max.
 Protection Class : IPX 4
 Water/Liquid Suction Capacity : 11 lt.

• All declared values on the product and on the printed leaflets are picked up after laboratory measurements performed according to related standards. These values may differ upon usage and ambient conditions.

3 Using your machine

Preparation for Use

Fill 1,5 liters of water into the container. The water level should not exceed the "MAX" level indicated on the container. Fit the air distributing part by sliding it into its slot located on the container. Put the water separator on the container and place the HEPA filter on top of it. Place the motor unit on the container and secure it by locking the container locking/unlocking parts on each side. Connect the hose to the inlet socket located on the container. Attach the extension tubes, which have been mounted to each other, to the hose handle. You can connect only one extension tube instead of two tubes or you can attach the accessories directly to the hose handle without using any tube.



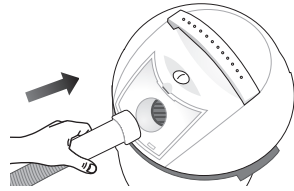
(Figure 14)

3 Using your machine

Operating the appliance

After checking if the voltage meets the rated voltage, plug in the appliance. Press on/off switch (2) located on the top of the appliance.

If the water becomes very dirty during cleaning, replace it as described in the "Maintenance and Cleaning the Appliance" section.

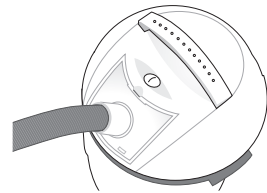


(Figure 16)

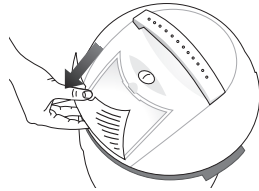
Blower Function

Remove the blower cover lid and insert the hose into the opening on the body.

CAUTION : This appliance is not a wet&dry vacuum cleaner, but a dry vacuum cleaner with water filtration. Avoid sucking any type of liquid with this vacuum cleaner.



(Figure 17)

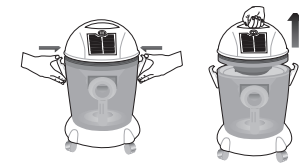


(Figure 15)

4 Maintenance and Cleaning

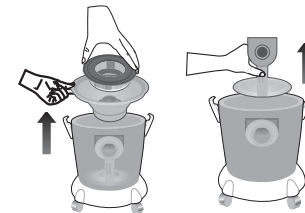
- To empty the water inside the container, switch off the appliance by pushing on the On/Off switch and disconnect the power supply cable from the mains.
- Remove the motor unit after unlocking the container locking/unlocking parts on each side of the container.
- Remove the water separator and the air distributing part.
- Empty the water inside the container by tilting it towards the opposite side of the inlet socket. You can use the handle of the container.
- It is strongly recommended to dump the water inside the container and to wash out any dirt that might be remaining inside the container after each use.
- It is recommended to wipe inside the container with a dry cloth after washed.
- You may wash the HEPA filter under the water.
- It is recommended that the vacuum cleaner is stored without water inside the container. It is best to fill the filtration water (1,5 l) right before the use.

If the vacuum cleaner overturns accidentally during operation, switch the unit off and unplug immediately. Dump the water inside the container and follow the cleaning procedure described in "Maintenance and Cleaning the Appliance" section, above. Make sure that all the parts have been dried before using the appliance again.



(Figure 1)

(Figure 2)



(Figure 3)

(Figure 4)

Warnings

Please make sure that the air distributing part and water separator parts are always in place when the vacuum cleaner is operated.

ARKA KAPAK